



High-output, finned all-copper heat exchangers

Isolated double o-ring flange design

Hydrastone™ cement lining provides long tank life

No anode rod required

High impact composite jacket cannot rust or corrode

- Heat trap and hot water outlet location specially designed to reduce unnecessary heat loss
- No limitations on water quality
- Electronic controller provides accurate and reliable temperature control
- 7 year warranty

High performance and high efficiency

The Vaughn HX (Side Mount Indirect Heat Exchanger) combines advanced engineering and a Hydrastone lining to provide the industry's most robust and reliable indirect water heater. The high efficiency design includes a field removable all copper heat exchanger coil to provide maximum hot water output while significantly reducing mineral build up. The Vaughn HX includes an electronic controller with adjustable differential to ensure delivery of temperature accuracy and continuous hot water. The tanks are insulated with non-CFC polyurethane foam for maximum efficiency.

Side Mount Indirect Heat Exchanger

High Performance and High Efficiency

Available in 65-119 Gallon Capacities



HS

S E R I E S

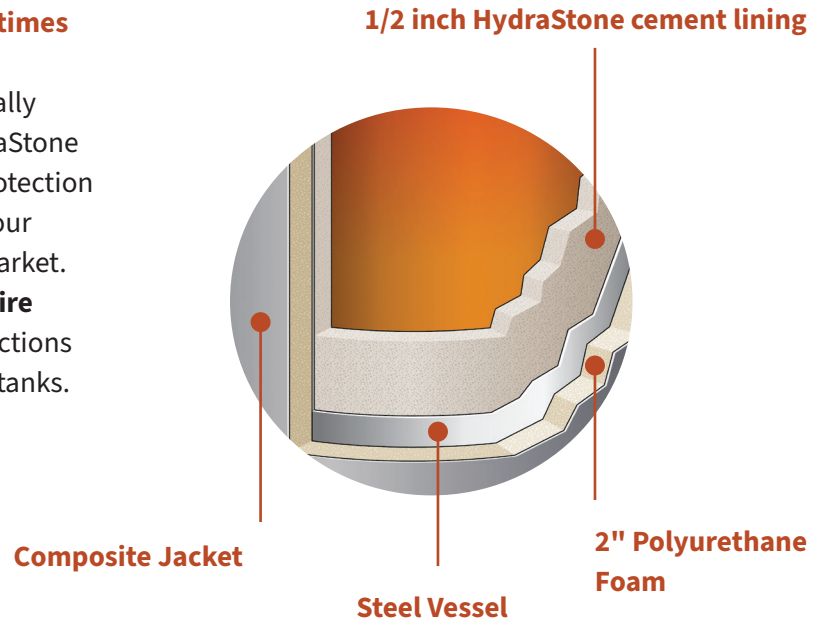


978-462-6683
vaughncorp.com
sales@vaughncorp.com

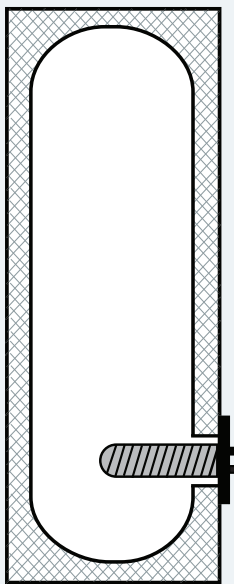
THE BENEFIT OF HYDRASTONE™ LINED TANKS

1/2 inch high density HydraStone cement is 100 times thicker than a glass lining

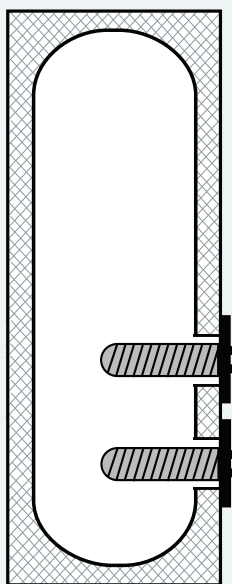
Full and uniform coverage is achieved by centrifugally spinning the tank with the precise amount of HydraStone cement inside. This process provides maximum protection from the corrosive effects of hot water and makes our water heaters some of the longest lasting on the market. Additionally, **HydraStone lined tanks do not require a sacrificial anode rod**, eliminating periodic inspections and replacement costs associated with glass lined tanks.



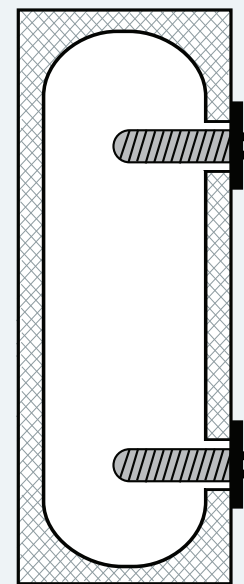
TANK CONFIGURATIONS



Single HX

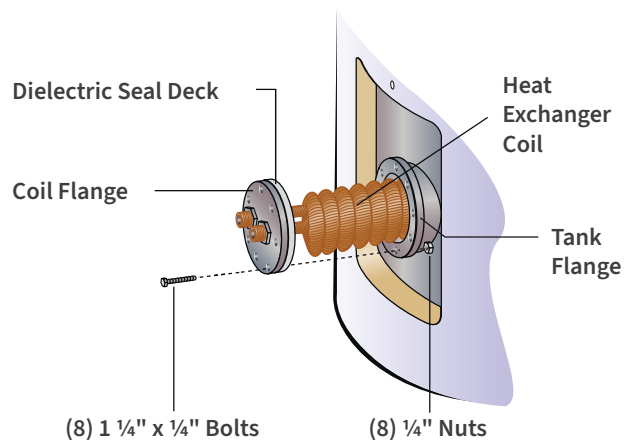


Double HX



Double HX
(Top and Bottom)

REMOVABLE HEAT EXCHANGER



Side Mount

Vaughn's all-copper finned side mount heat exchangers are designed to provide optimum performance while still allowing for easy maintenance through an easy-access flange.

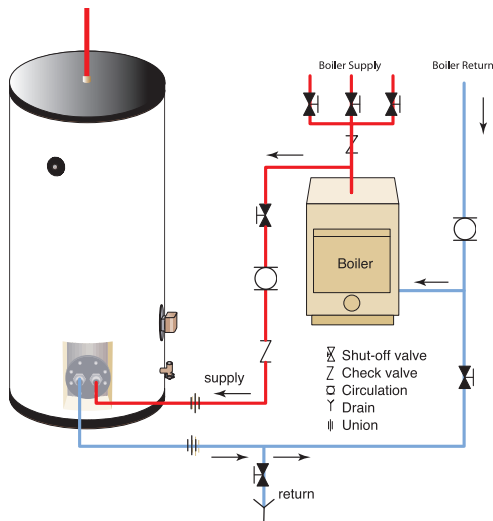
The flange's double o-ring design is guaranteed to provide complete coil isolation and prevent corrosion.

INDIRECT WATER HEATER SPECIFICATIONS

Tank:	Hydrastone™ Lined Steel
Capacities:	65 - 119 Gallons
Orientation:	Vertical
Inlet Size:	3/4" Female NPT
Outlet Size:	3/4" Male NPT
Drain Size:	3/4" GHT Connection
Relief Valve Opening:	3/4" Female NPT
Type:	T&P, 210°F, 150 psi
Tank Rating:	150psi WP, 300psi TP

Standby Heat Loss:	0.5°F/Hr Typical
Coil Construction Type:	Removable
Material:	Copper Fin Tube
Rating:	150psi WP, 300psi TP
Warranty Tank:	7 Years Non Pro-Rated
Coil:	7 Years Non Pro-Rated
Jacket:	High Impact Colorized Composite
Insulation:	2" Polyurethane Foam
Color:	White/Black Trim

PIPING LAYOUTS



OPTIONAL EQUIPMENT

Double wall heating coil with a leak detection port

1 1/2" Male NPT inlet and outlet water connections.

Electric heating element for back-up heating, please specify wattage and voltage

3" Polyurethane foam insulation

Secondary heating coil located in upper portion of tank for auxiliary heating

Base Model		Storage Capacity (Gallons)	Style	Overall Dimensions		Shipping Weight (lbs)	1st Hour Rating (Gallons)		Continuous Demand Rating (gal/hr)	
				Height	Diameter		Single Wall	Double Wall	Single Wall	Double Wall
One 3/4" HX	S65WHX201	65	Side Mount HX	47 7/8"	26"	299	210	120	150	60
	S80WHX201	80		58"	26"	325	222	132		
	S120WHX201	119		69"	28"	410	254	164		
Two 3/4" HXs at bottom	S65WHX202	65	Side Mount HX	47 7/8"	26"	299	350	179	285	114
	S80WHX202	80		58"	26"	325	365	194		
	S120WHX202	119		69"	28"	410	405	234		
One 3/4" HX top, one 3/4" HX bottom	S65WHX202TB	65	Side Mount HX	47 7/8"	26"	299	390	155	225	90
	S80WHX202TB	80		58"	26"	325	305	170		
	S120WHX202TB	119		69"	28"	410	345	210		
One 1" HX	S65WHX501	65	Side Mount HX	47 7/8"	26"	299	322	—	257	—
	S80WHX501	80		58"	26"	325	331	—	257	
	S120WHX501	119		69"	28"	410	361	—	257	
Two 1" HXs at bottom	S65WHX502	65	Side Mount HX	47 7/8"	26"	299	579	—	514	—
	S80WHX502	80		58"	26"	325	588	—		
	S120WHX502	119		69"	28"	410	618	—		
One 1" HX top, one 1" HX bottom	S65WHX502TB	65	Side Mount HX	47 7/8"	26"	299	579	—	514	—
	S80 WHX502TB	80		58"	26"	325	588	—		
	S120WHX502TB	119		69"	28"	410	618	—		

NOTE: All recovery ratings based upon 40-120°F (80°F ΔT) hot water when supplied with 180°F boiler water