

HX MODELS with 6" Flange
Double O-ring Design
 Date Range: June 2011– Present

T&P Relief Valve
 Part #
 Residential – FT2201075158
 D Model – FT2201075404

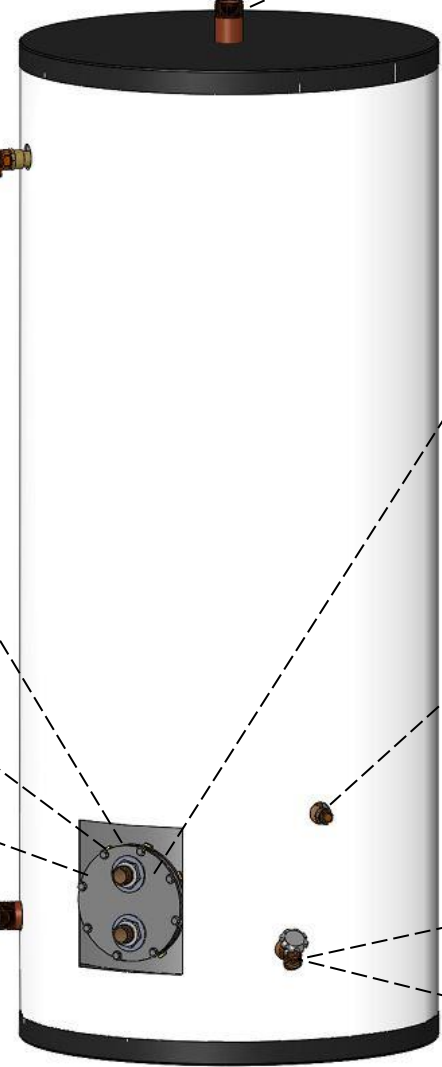
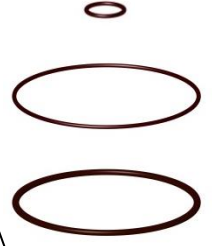
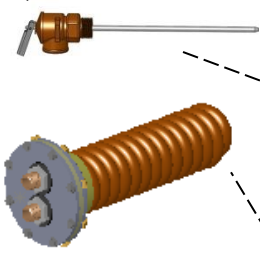
6" Complete Coil Assembly
 1" - WP045315
 ¾" - WP045615
 ¾" DW - WP045415

(8) x Bolts
 (8) x Lock Washers
 (8) x L-Nuts
 (2) x Bulkhead Fittings and Hardware
 (2) x Fiber Washers
 (2) x Fitting O-Ring (1 3/16" or 1.484")
 (1) x Coil Plate 6"
 (1) x Seal Deck 6"
 (1) x Outer (Thin) O-Ring 6 3/4"
 (1) x Inner (Thick) O-Ring 6 1/4"
 (1) x O-Ring Lube
 (1) x Coil

Gasket Kit- 1" – MS01601701
 ¾" - MS01601703
 ¾" DW – MS01601703

(8) x Bolt
 (8) x Lock Washers
 (8) x L-Nuts
 (2) x Bulkhead Fittings and Hardware
 (2) x Fiber Washers
 (2) x Fitting O-Ring (1 3/16" or 1.484")
 (1) x Seal Deck 6"
 (1) x Outer (Thin) O-Ring 6 3/4"
 (1) x Inner (Thick) O-Ring 6 1/4"
 (1) x O-Ring Lube

(1) x 1 ½" Cold Water Inlet Diffuser
 Part #MS036018000025



(1) x Hot Water Outlet
 Part #
 ¾" – FT0901075300
 1 ½" – FT0401150400

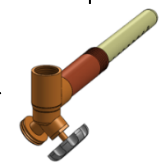
(1) x Seal Deck
 Part #
 1" – PP21087875003
 ¾" - PP21087875002
 ¾" DW – PP21087875002



(1) x Immersion Well ¾"
 Part #FT070107500



(1) x ¾" Combo Inlet/Drain
 Part #WP261210



(1) x ¾" Commercial Brass Drain
 Part #FT020107500

NOTE: 1" coil assembly will have 1" NPT fittings, ¾" coil assembly will have ¾" NPT fittings, and ¾" DW coil assembly will have ¾" NPT fittings with 1/8" hole in the side of the fitting